

## THE SHINING STAR OF ASIAN SIDE

AS BEAUTIFUL AS ISTANBUL, AS SPECIAL AS ISTANBUL..



Cevahir Hotel Istanbul Asia, preparing to provide positive value to the Asian side of Istanbul, overlooking to the Prince Islands, is located in Maltepe Dragos coast, 15km from Sabiha Gökçen Airport and 5km from Bostancı Pier.

Cevahir Hotel Istanbul Asia, that comprises Indoor and outdoor swimming pools, Spa Health Center, Meeting Rooms and Ballrooms that have been thought to the smallest details for your comfortable accommodations and splendid organizations, is giving all the beauty of life to its guests



## ROOMS

Cevahir Hotel Asia, brings together luxury, comfort and grace with the panoramic and unique landscape that connects the Asian side to the Prince Islands with its 198 rooms. Our peerless view rooms, are providing the ideal ambience to savour resting with the (King-size) beds where you can relieve the stress and tiredness of the day. All of our 23 & 76 square meters rooms are equipped and decorated with functional furnitures and colors. Rooms raise the comfort to the top level with panoramic view baths. With High-speed wired and wireless internet connection, your connection with world lasts uninterrupted. You will experience sleeping in unique comfort at nights trying our 'pillow menu', that will answer your personal choices, meet your different needs. You can easily charge your technological wonder smart phones with the iPad/iPhone charge station located right next to your bed and watch pleasant movies at special design, behind mirror LED Televisions.

### STANDARD ROOM:

Tastefully furnished, 20 & 30 square meters city and sea view optional room. 1 big bed (2mX2m) and 2 separate beds option. Closable window between bathroom and room when desired in every room, Anti- allergic material. Kettle & tea-coffee service. Pillow menu upon request. High-speed wireless internet connection. 32 inch Full HD LED TV. Special design glass counter designed sink, bathtub, corded emergency call button, hair dryer, bath telephone.



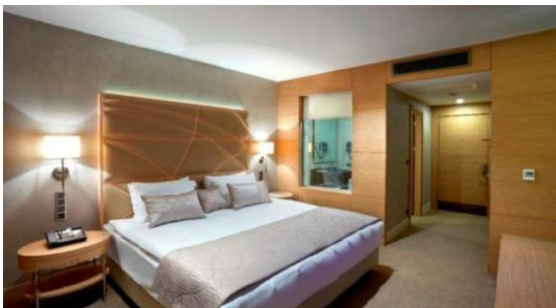
## SUPERIOR ROOM

Tastefully furnished, 26 & 34 square meters fully sea view room. 1 big bed (2mX2m) and 2 separate beds option. Closable window between bath and room when desired in every room, Anti- allergic material. Kettle & tea-coffee service. Pillow menu upon request. High-speed wireless internet connection. 32 inch Full HD LED TV. Special design glass counter designed sink, bathtub, corded emergency call button, hair dryer, bath telephone, automatic curtain.



## CORNER ROOM:

Tastefully furnished, 40 square meters sea view room. 1 big bed (2mX2m) option. Closable window between bath and room when desired in every room, Anti- allergic material. Kettle & tea-coffee service. Pillow menu upon request. High-speed wireless internet connection. 32 inch Full HD LED TV. Special design glass counter designed sink, bathtub and shower enclosure, corded emergency call button, hair dryer, bath telephone, bathroom scale, bathrobe, dental and shaving kit, separate dressing room.





## DELUXE ROOM:

Tastefully furnished, 46 square meters sea view room. 1 big bed (2mX2m) option. Closable window between bath and room when desired in every room, Anti- allergic material. Kettle & tea-coffee service. Pillow menu upon request. High-speed wireless internet connection. 32 inch Full HD LED TV, 42 inc LED TV in living room, Special design glass counter designed sink, shower stall or bathtub, corded emergency call button, hair dryer, bath telephone, bathroom scale, bathrobe, dental and shaving kit and sofa set and dining table.



## ISLAND SUITE:

Tastefully furnished, 78 square meters room. 1 big bed (2mX2m) option with bedroom and separate saloon. Anti-allergic material. Kettle & tea-coffee service. Pillow menu upon request. High-speed wireless internet connection. 32 inch Full HD LED TV, 42 inch LED TV in the living room, a large bathroom, Special design glass counter designed sink and hot tub, shower enclosure, separate WC for guest, corded emergency call button, hair dryer, bathroom scale, bathrobe, dental and shaving kit, bath telephone and sofa set.



## RESTAURANT AND BAR

At indoor and outdoor 300-seat Antigone Restaurant, you will be able to taste various tastes of Mediterranean Cuisine together. Antigone Restaurant is waiting for you to carry out your unforgettable organizations accompanied with the view of Prince Islands.

Pita Brasserie & Patisserie that located in the Lobby, is a matchless place for snacks and place to drink coffees with forty years of sake according to a Turkish saying.

It will make us exceedingly pleased to host your feast that you will organize around our outdoor pool.



## MEETING ROOMS

At Cevahir Hotel Istanbul Asia, on 650 square meters land, there is 1 Ballroom that is able to get separated into 6 different halls with 560- seat feast set up and are 8 Meeting Rooms between 25 and 90 square meters.

While cutting edge technology audio-visual systems and presentation equipments meet all needs of managers on vacation and business people, they will ensure that meetings and events go productive and delightful.

## BALLROOM



Heybeliada Hall- Büyükada Hall-  
Burgaz Adası Hall

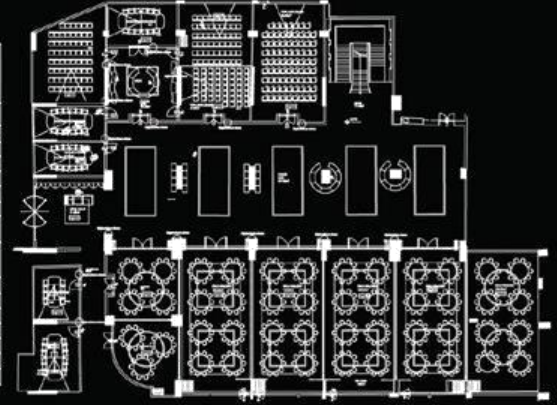


Sivriada Hall- Tavşan Adası Hall-  
Sedef Adası Hall- Yassı Ada Hall-  
Kınalı Ada Hall



Toplantı Odaları  
Meeting Rooms

Toplantı Salonu Meeting Rooms	Alan Room Size (m2 / sqm)	En - Boy Width/Length (m)	Yükseklik Height (m)	Tiyatro Theater	Board	Sınıf Classroom	Ziyafet Banquet	Kokteyl Cocktail
Büyükada	93,48	12,3-7,6	3	90	40	60	60	75
Heybeliada	93,40	12,4-7,5	3	90	40	60	60	75
Burgaz Adası	65,17	7,6-10,33	3	85	30	40	40	60
Kınalıada	36,10	7,5-4,5	3		14			
Yassıada	33,00	4,95-7	3		14			
Sedef Adası	26,13	4,75-5,4	3		14			
Tavşan Adası	25,62	3,47-7,4	3		10			
Sivriada	25,45	3,44-7,4	3		14			
Balo Salonu Ball Rooms								
Prens Adası	650	14,2*7,5	4	600		400	500	650
b1	110	14,2*7,5	4	110	46	69	84	80
b2	108	14,2*7,5	4	110	46	69	84	90
b3	110	14,2*7,5	4	110	46	69	84	85
b4	109,5	14,2*7,5	4	110	46	69	84	85
b5	104	14,2*7,5	4	110	44	69	84	85
b6	104	14,2*7,5	3				84	85



*We are at your service with our exclusive F & B staff to make your Wedding – Engagement – Gala Organizations unforgettable*

*You dream it, we make it happen...*



## SPA CENTER AND HEALTH CLUB

In Spa Health Center that spreading on 1350 square meters land, our guests will push the limits of comfort and joy.

- Massage Rooms
- Indoor swimming pool
- Jacuzzi
- Turkish Bath
- Snow fountain
- Steam room
- Sauna
- Fitness Center



[www.cevahirhotelasia.com](http://www.cevahirhotelasia.com)  
Yalı Mahallesi Turgut Özal Bulvarı No:261 Maltepe / İstanbul  
T: 0216 500 00 00 F: 0216 500 00 55 info@cevahirhotelasia.com